



Moulding the Future

permacrete

COLUMNS/CAPITALS/BASES

Specialized permanent structural columns for the construction industry

permastruct / permapost / taperstruct



Made from **resocrete's** Mod 34 formulation, the **permastruct/permapost/taperstruct** columns are ready to order, lightweight, load bearing structural columns.

permapost is available in a classic flat surface finish, fluted or chamfered in sizes of 100mm, 130mm, 150mm, up to 3m long.

taperstruct and **permastruct** are available in both tapered and straight profiles, and in a wide range of diameters and lengths. These lightweight columns, with their unique "Top-hat Nib" location system for installation are simply placed over the nibs, epoxied into place and then painted.



RATTRAY'S CAMP MALA MALA

No More Hassle

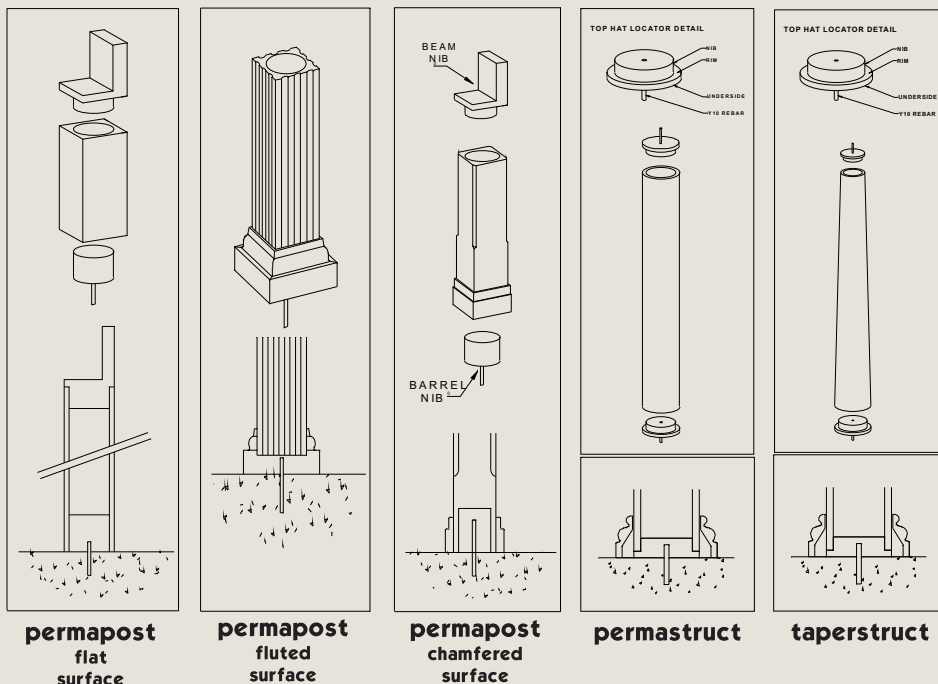
- . Easy installation using unique "Top-Hat Nib"
- . No more shuttering and pouring of concrete
- . No more filling and sanding shutter flash lines to get a smooth surface
- . No down time waiting for concrete to cure
- . Full structural load can be applied immediately after epoxy has cured (+/- 6 hours)
- . High load capacity, columns are available for loads up to 20 tons
- . For easy Top-Hat installation see CAD drawing & instructions

Technical Specifications

- . Mod 34 Natural Stone, resin bonded formulation
- . 43 Mpa flexural strength
- . 130 Mpa compressive strength
- . Lightweight (230 DIAM x 2500 LONG = 65kg)
- . Impervious to water - paint doesn't peel
- . Outstanding UV resistance
- . High shock absorbency
- . Resistant to biological attack
- . Maintenance free

Characteristics

- . Light-weight
- . Easy to install
- . Fine definition of finish
- . 0% water absorption - no mould growth
- . No need for filling or sanding
- . Superior structural characteristics
- . Wide range of lengths & diameters
- . Matching Caps & Bases available





permacrete

COLUMNS/CAPITALS/BASES

Moulding the Future



Specialized precast permanent form-work columns for the construction industry

permaform



Made from **resocrete's** Mod 33 formulation, the **permaform** columns are ready to order, and serve as lightweight, permanent form-work. Available in both tapered and straight profiles, and in a wide range of diameters and lengths, these columns, designed as a permanent shutter system and made from **resocrete** Mod 33, the **permaform** column tube is a non-structural system and must be filled with concrete and steel to your engineers specification to become load bearing. A faster and easier system to use compared to steel shuttering, with many more advantages over conventional shuttering and precast systems.

Characteristics

Technical Specifications

- . Lightweight and easy to transport;
- . Smooth finish therefore no finishing plaster work
- . No need for filling or sanding
- . Strong and durable
- . 0% water absorption
- . UV stable & weather resistant
- . Diameters from 200mm to 475mm
- . Lengths from 1 meter to 6 meters

- . Mod 33 Natural Stone, resin bonded formulation
- . 25 Mpa flexural strength
- . 110 Mpa compressive strength
- . Lightweight (230 DIAM x 2500 LONG = 42kg)
- . Impervious to water - paint doesn't peel
- . Outstanding UV resistance
- . High shock absorbcency
- . Resistant to biological attack
- . Maintenance free



Specialized precast column capitals and bases for the construction industry

permacap/permabase



Complimenting the **permacrete** range of columns, the **permacaps** and **permabases** have a hollow central core to enable the column to pass through the cap / base. This ensures accurate setting out and also reduces the structural moment points to two instead of four, as in conventional precast column bases and capitals. These units can be ordered in either lightweight roto-moulded form made from our Mod 6 formulation, or in solid cast form made from our Mod 37 formulation.

permacap

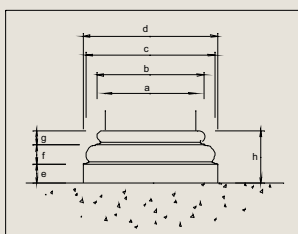
Technical Specifications

- . Mod 6 Natural Stone, resin bonded formulation
- . 8 Mpa flexural strength
- . 70 Mpa compressive strength
- . Lightweight (230mm diameter Capital = 5 kg)
- . Impervious to water - paint doesn't peel
- . Outstanding UV resistance
- . Resistant to biological attack
- . Maintenance free

permabase

Technical Specifications

- . Mod 37 Natural Stone, resin bonded formulation
- . 25 Mpa flexural strength
- . 110 Mpa compressive strength
- . Lightweight (230mm diameter Base = 11 kg)
- . Impervious to water - paint doesn't peel
- . Outstanding UV resistance
- . High shock absorbcency
- . Resistant to biological attack
- . Maintenance free



COLUMN SIZE	permacap / permabase DIMENSIONS (in mm)							
	a	b	c	d	e	f	g	h
200	200	295	350	400	60	70	45	175
240	245	295	350	400	60	70	45	175
300	314	354	416	440	70	85	45	200
350	350	410	490	515	80	100	55	235
380	395	395	490	515	80	100		180

Characteristics

- . Lightweight and easy to transport;
- . Smooth finish therefore no finishing plaster work
- . No need for filling or sanding
- . Strong and durable
- . 0% water absorption
- . UV stable & weather resistant

permaform
PERMANENT FORM-WORK
COLUMN



permastruct
PERMANENT STRUCTURAL
COLUMN



taperstruct
PERMANENT STRUCTURAL
TAPERED COLUMN



taperform
PERMANENT FORMWORK
TAPERED COLUMN



permapost square
PERMANENT STRUCTURAL POST
SQUARE CORNERS



permapost chamfered
PERMANENT STRUCTURAL POST
CHAMFERED CORNERS



balipost
PERMANENT STRUCTURAL POST
BALI STYLE



permacap / permabase
PERMANENT COLUMN
BASE & CAPITAL



permastruct / permapost
PERMANENT COLUMN / POST

GALLERY

