

permacrete

COLUMNS

resocrete

Moulding the Future

PERMAPOST

SPECIALIZED STRUCTURAL COLUMNS FOR THE CONSTRUCTION INDUSTRY

No More Need For Concrete And Steel Reinforcing

Accommodating to the ever growing needs of the construction industry, **resocrete** has added **permaposts** to their existing range of columns. Made from **resocrete's** Mod 34 formulation, the **permapost** columns are ready to order, lightweight, load bearing structural columns.

permaposts are available in a classic flat surface finish, fluted or chamfered, and are available in sizes of 100mm, 130mm or 150 mm, up to 3 meters long. These lightweight columns, with their unique "Top-hat Nib" location system for installation are simply placed over the nibs, epoxied into place and then painted.

Technical Specifications

- . Mod 34 Natural Stone, resin bonded formulation
- . 43 Mpa flexural strength
- . 130 Mpa compressive strength
- . Lightweight (130mm x 2950 LONG = 54kg)
- . Impervious to water - paint doesn't peel
- . Outstanding UV resistance
- . High shock absorbency
- . Resistant to biological attack

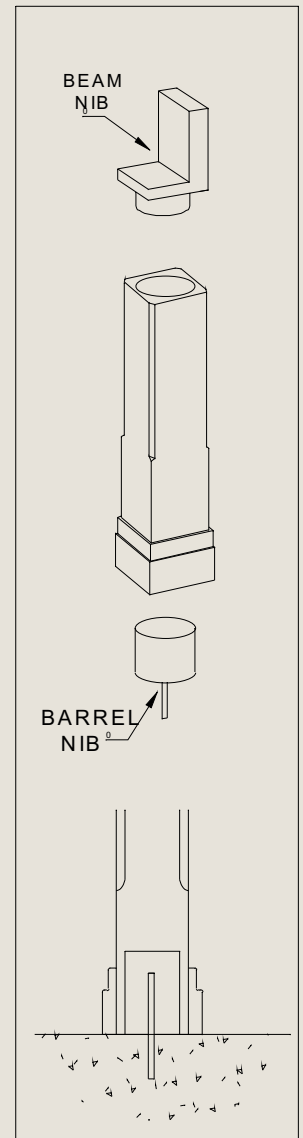
Characteristics

- . Light-weight
- . Easy to install
- . Fine definition of finish
- . 0% water absorption - no mould growth
- . No need for filling or sanding
- . Superior structural characteristics
- . Wide range of lengths & diameters
- . Matching Caps & Bases available



No More Hassle

- . Easy installation using unique "Top-Hat Nib"
- . No more shuttering and pouring of concrete
- . No more filling and sanding shutter flash lines to get a smooth surface
- . No down time waiting for concrete to cure
- . Full structural load can be applied immediately after epoxy has cured (+/- 6 hours)
- . High load capacity, columns are available for loads up to 20 tons
- . For easy Top-Hat installation see CAD drawing & instructions



**PERMAPOST COLUMN
WITH BEAM & NIB
-ATTACHMENT SYSTEM**

Visit our web-site at www.resocrete.co.za

Copyright - all information contained in this document is copyright and is the property of Resocrete