

permacrete

COLUMNS



PERMAPOST

SPECIALIZED STRUCTURAL COLUMNS FOR THE CONSTRUCTION INDUSTRY

No More Need For Concrete And Steel Reinforcing

Accommodating to the ever growing needs of the construction industry, **resocrete** has added **permaposts** to their existing range of columns. Made from **resocrete's** Mod 34 formulation, the **permapost** columns are ready to order, lightweight, load bearing structural columns.

permaposts are available in a classic flat surface finish, fluted or chamfered, and are available in sizes of 100mm, 130mm or 150 mm, up to 3 meters long. These lightweight columns, with their unique "Top-hat Nib" location system for installation are simply placed over the nibs, epoxied into place and then painted.

Technical Specifications

- . Mod 34 Natural Stone, resin bonded formulation
- . 43 Mpa flexural strength
- . 130 Mpa compressive strength
- . Lightweight (130mm x 2950 LONG = 54kg)
- . Impervious to water - paint doesn't peel
- . Outstanding UV resistance
- . High shock absorbency
- . Resistant to biological attack

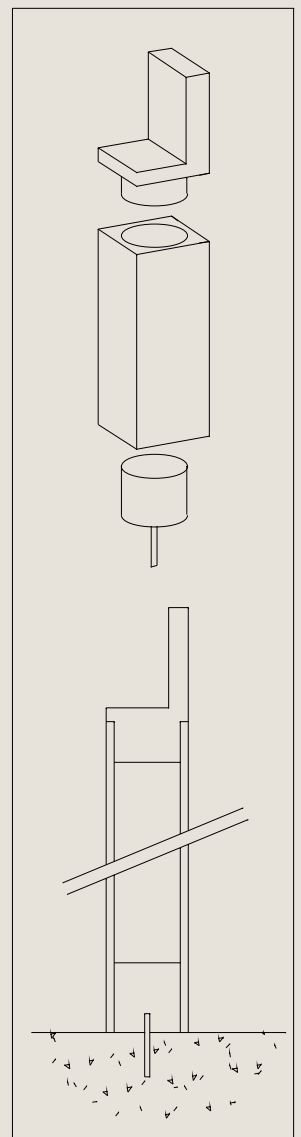
Characteristics

- . Light-weight
- . Easy to install
- . Fine definition of finish
- . 0% water absorption - no mould growth
- . No need for filling or sanding
- . Superior structural characteristics
- . Wide range of lengths & diameters
- . Matching Caps & Bases available



No More Hassle

- . Easy installation using unique "Top-Hat Nib"
- . No more shuttering and pouring of concrete
- . No more filling and sanding shutter flash lines to get a smooth surface
- . No down time waiting for concrete to cure
- . Full structural load can be applied immediately after epoxy has cured (+/- 6 hours)
- . High load capacity, columns are available for loads up to 20 tons
- . For easy Top-Hat installation see CAD drawing & instructions



**PERMAPOST COLUMN
WITH BEAM & NIB
-ATTACHMENT SYSTEM**

Visit our web-site at www.resocrete.co.za

Copyright - all information contained in this document is copyright and is the property of Resocrete