



permastruct

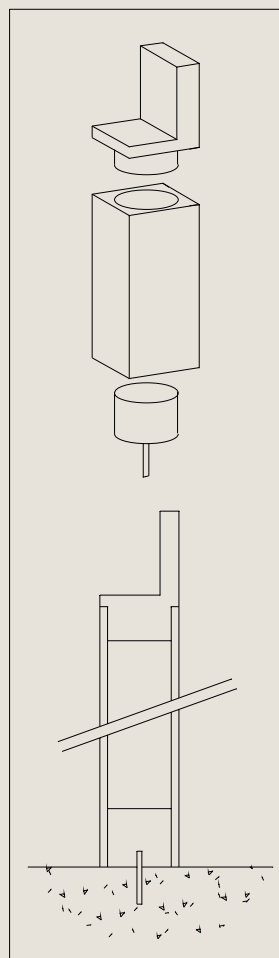
COLUMN INSTALLATION

Moulding the Future

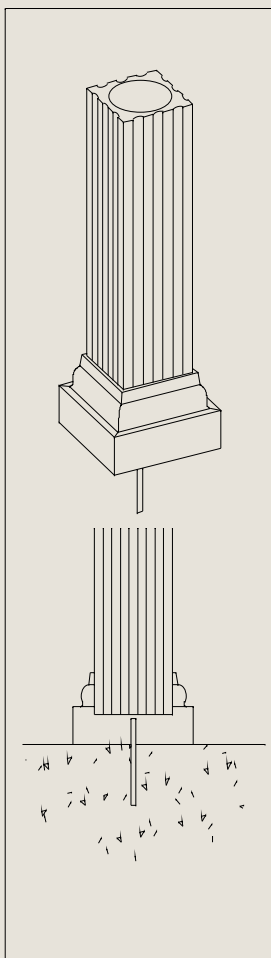
Made from **resocrete's** Mod 34 formulation, the **permastruct/permapost/taperstruct** columns are ready to order, lightweight, load bearing structural columns.

The **permapost** is available in a flat, fluted or chamfered surface finish, and in sizes of 100mm, 130mm, 150mm and 200mm square, and up to 3000mm long.

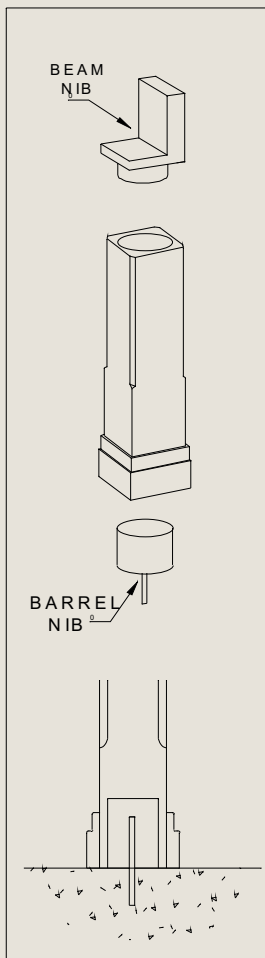
Taperstruct and **permastruct** columns are available in both tapered and straight profiles, and in a wide range of diameters and lengths. These lightweight columns, with their unique "Top-hat Nib" location systems for installation are simply placed over the nibs, epoxied into place and then painted.



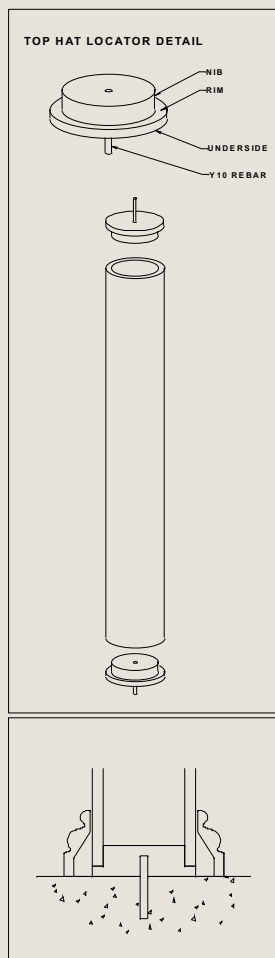
permapost
flat
surface



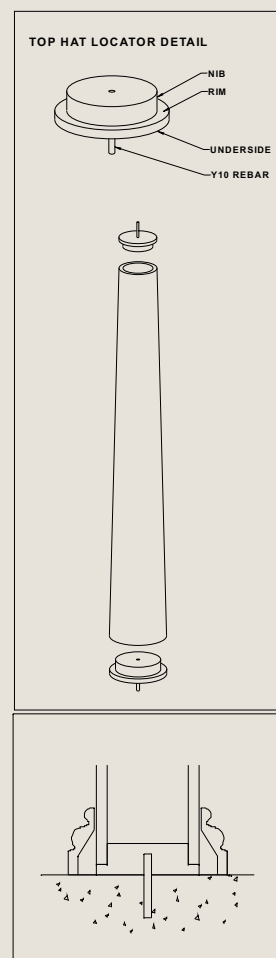
permapost
fluted
surface



permapost
chamfered
surface



permastruct



taperstruct





permastruct

COLUMN INSTALLATION

Moulding the Future

THE permastruct COLUMN ASSEMBLY / INSTALLATION INSTRUCTIONS

- STEP 1:** DRILL 12mm HOLES 100mm INTO SUBSTRATE (OR TO ENGINEER'S SPECIFICATION) ENSURING THAT ALL DUST AND DEBRIS IS BLOWN OUT OF THE HOLE.
- STEP 2:** ROUGHEN UP RIM AND NIB SECTION OF TOP-HATS AND INSIDE CONTACT POINTS OF COLUMN TUBE WITH COARSE SANDPAPER (PREFERABLY USE 30 GRIT SANDING DISK ON 115MM ANGLE GRINDER)
- STEP 3:** BUTTER UNDERSIDE OF TOP-HAT SECTION AND REBAR, AND INJECT **resocrete** 1:1 EPOXY INTO HOLE, ENSURING THAT THE EPOXY REACHES THE BOTTOM OF THE HOLE.
- STEP 4:** LOCATE TOP-HAT INTO PLACE BY INSERTING REBAR INTO THE DRILLED HOLE AND PUSH THE TOP-HAT FIRMLY DOWN. SCRAPE OFF EXCESS EPOXY AND APPLY TO NIB OF TOP-HAT SECTION, APPLYING MORE EPOXY SO THAT NIB & RIM OF THE TOP-HAT IS LAYERED WITH EPOXY.
- STEP 5:** PLACE THE **PERMASTRUCT** COLUMN OVER THE TOP-HAT, PRESSING DOWN FIRMLY. SCRAPE EXCESS EPOXY OFF AND APPLY TO NIB & RIM OF SECOND TOP-HAT.
- STEP 6:** IF REQUIRED PUT ADDITIONAL EPOXY ON NIB & RIM OF SECOND TOP-HAT SECTION AND PLACE UP SIDE DOWN INTO TOP OF COLUMN TUBE, PRESSING DOWN FIRMLY.
- STEP 7:** SLIDE COLUMN BASE WITH THE SQUARE BASE FACING DOWNWARD OVER THE **PERMASTRUCT** COLUMN, AND REPEAT FOR THE COLUMN CAPITAL WITH THE SQUARE BASE FACING UPWARDS.
- STEP 8:** ALLOW EPOXY TO DRY FOR ABOUT 6 HOURS, (TO MANUFACTURERS SPECIFICATION)

YOUR permastruct COLUMN IS NOW READY FOR YOU TO SHUTTER YOUR BEAM.

ONCE THIS IS COMPLETE SIMPLY SLIDE THE TOP COLUMN CAPITAL UP TO THE BEAM AND FIX INTO PLACE WITH EPOXY. YOU CAN FIX THE COLUMN BASE USING EITHER WITH EPOXY OR BY FILLING IT WITH CEMENT SLURRY

