

resoloo

Sanitation



DISABILITIES VIP TOILET

resocrete LamPlas Composite Modular Cladding Systems

As the name suggests, the **moducrete** range consists of a spectrum of modular products which, through unique design and assembly innovations, results in quick installation, reducing erection time on site, and minimizing disruptions to the work place.

Design

moducrete cladding systems finally offer the market a truly unique quality architectural cultured stone and resin composite cladding system for internal and external applications.

moducrete is available in any of our stone colours, our plain base grey compound for hard wearing finishes, or in a satin epoxy coated finish to any colour requirement and can be produced with a satin smooth or designer textured finish, or custom made to the project or designers specifications.

From conception to CAD, from create to install, the aesthetic flexibility **moducrete** is able to offer is nothing short of remarkable.

Introducing The **resoloo** DISABILITIES VIP Modular Toilet, addressing the core of Africa's sanitation needs

In trying to satisfy Africa's ever increasing housing and sanitation shortage, **resocrete** was tasked with solving a number of unique and fundamental problems, i.e:

- High transportation costs due to heavy weight of alternative products / concrete
- Transportation challenges due to lack of road infrastructure needed to transport heavy alternatives
- Up to 20 percent breakages during transportation due to fragile nature of concrete
- Slow erection time due to heavy component pieces
- Hygiene concerns due to high porosity of concrete
- High maintenance and corrosion due to steel frame structure
- Slow production due to curing time of concrete and bricks
- Difficult to move or relocate due to excessive weight and method of construction
- Adaption to water-borne sewerage limitations
- High Carbon Footprint due to manufacture from concrete / cement
- High internal heat build-up



Visit our web-site at www.resocrete.co.za

Copyright - all information contained in this document is copyright and is the property of Resocrete



Moulding the Future

Recently launched from the **moducrete** range of products is the new **LamPlus** Resin Composite Modular Cladding System

Made from primarily waste products, recycled materials, by-product materials and natural stone, and with a zero moisture absorbency, **LamPlus** attains 98% green-build properties whilst retaining superior compressive strength, flexural strength, acoustic damping properties, as well as outstanding thermal blanketing

To meet the challenges outlined above, **resocrete** have designed a unique modular toilet system which is included in the stable of the **resocrete** range of products.

The **resoloo** VIP (ventilation improved) pit latrine is designed for fast erection, ease of moving / relocation, superior hygiene and zero maintenance.

Unlike associated products which are made from pre-cast concrete and cement block, **resoloo** Toilet Modules are fabricated from **resocrete's** **LamPlus** Composite Modular Cladding Panels resulting in a product with the following characteristics:



Product Characteristics:

- Incredible Light weight and Durable Product (up to 10 times lighter than concrete products)
- Sizeable transport savings due to lightweight product
- Simple, efficient and fast erection time (maximum 15 Minutes)
- Ideal for difficult and inaccessible terrain
- Flexural strength 16 times that of concrete products
- Unlikely transport and erection damage due to High Impact Resistance resulting in large saving in breakages
- Smooth non-porous wall, floor and roof panels are easy to keep clean and therefore far more hygienic than brick or concrete alternatives
- Zero maintenance or corrosion due to resin composite technology.
- Zero percent moisture absorption.
- Door manufactured out of **LamPlus** Resin Composite - no corrosion or scrap value.
- Unique dual operation safety door latch for added security
- Toilet Bowl available with optional urine diversion system
- Toilet Bowl easily adapted to water-borne sewerage

Visit our web-site at www.resocrete.co.za

Copyright - all information contained in this document is copyright and is the property of Resocrete

Product Specifications

Toilet Bowl

- EnviroSan VIP 480 plastic extruded toilet bowl for improved sanitation
- Optional Urine diversion system available

Vent Pipe

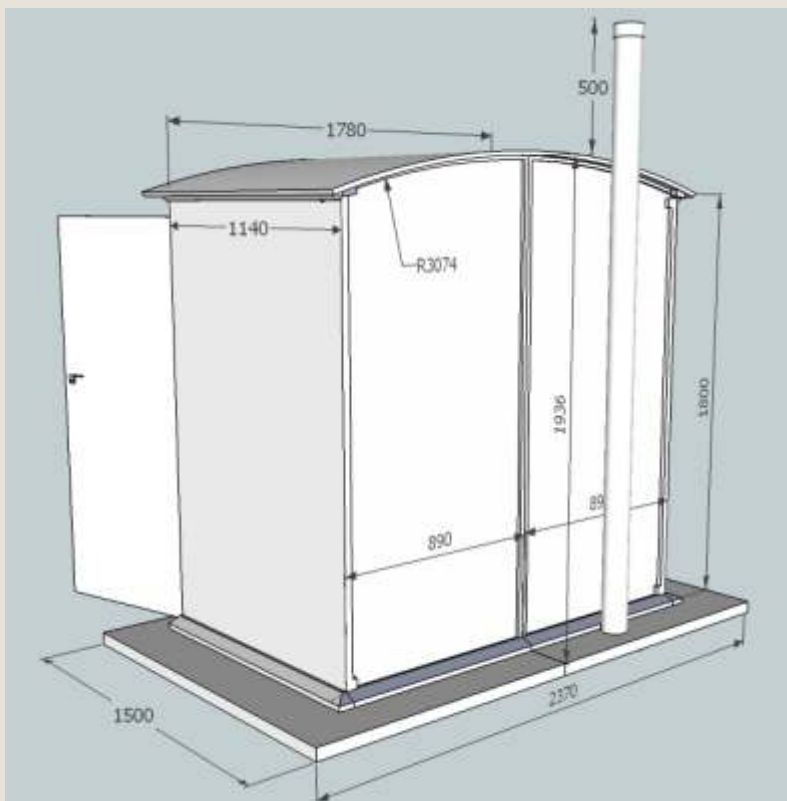
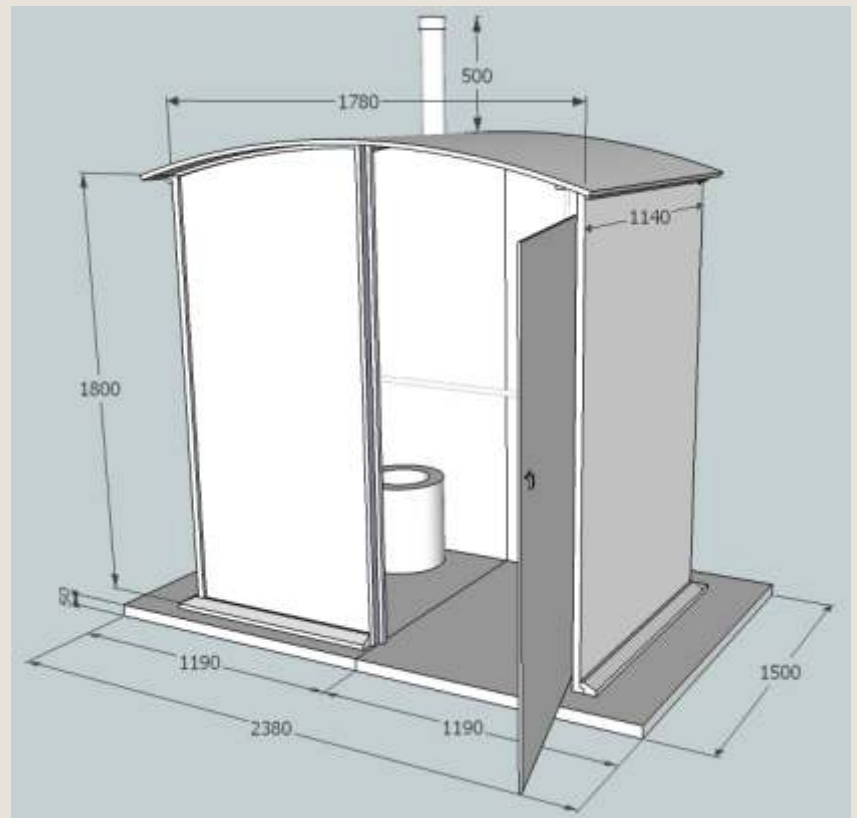
- 110mm diameter vent pipe fitted to the back of toilet venting the pit below
- Vent pipe protrudes 500mm above arched roof
- Vent pipe fitted with EnviroSan fly screen VIP

Hand Washing Facility

- EnviroSan hand-washing bracket with Tip-Tap and 2 liter water bottle
- Hand-washing facility fitted to interior or exterior side wall of toilet

Floor

- Comprising of two **LamPlas** Resin Composite slabs, a total of 2380mm wide x 1500mm deep x 30mm thick
- Total Slab Weight 47Kg
- **LamPlas** Resin Composite slab surface therefore impervious to moisture and bacterial attack



Walls

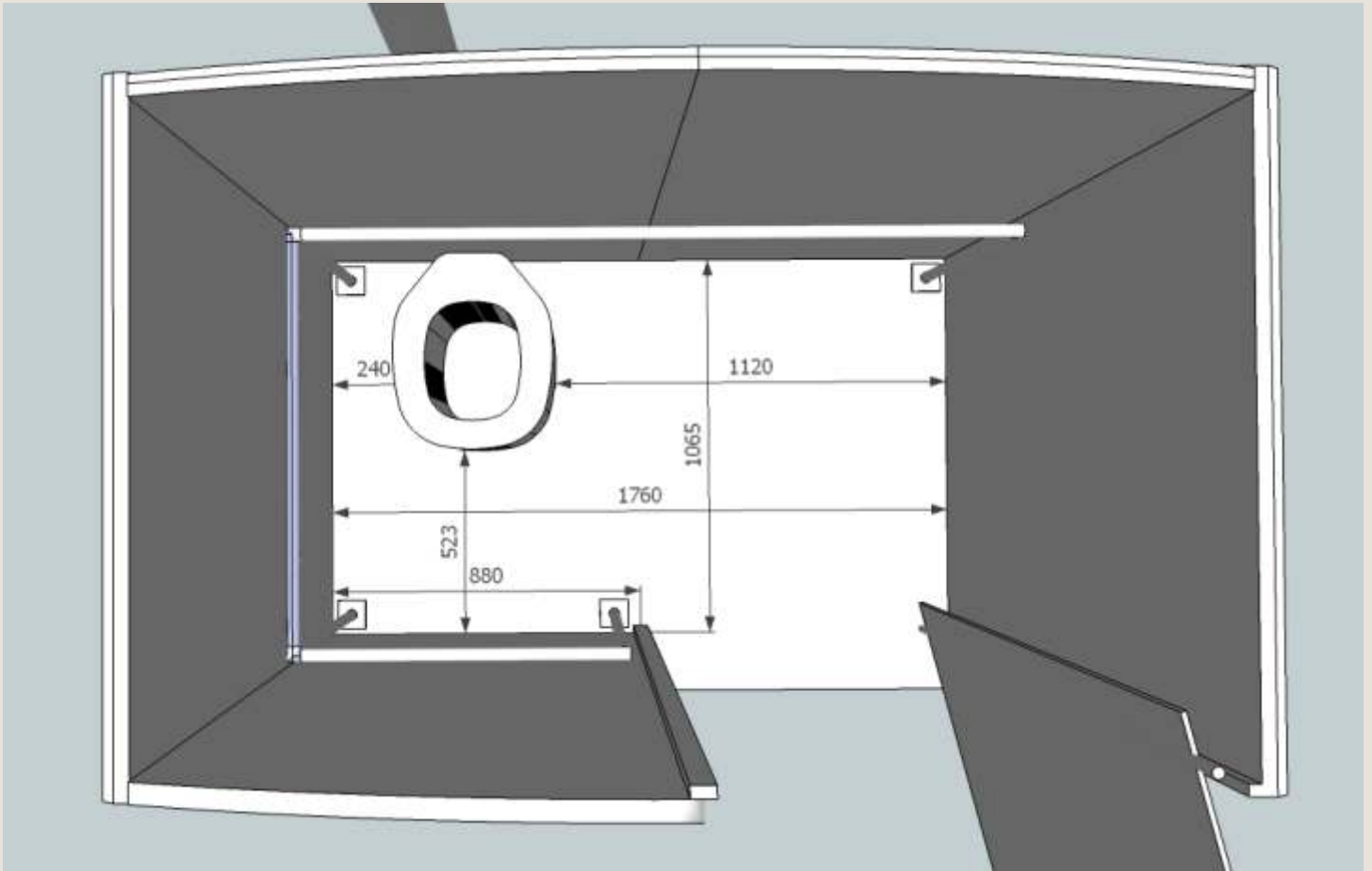
- Side walls 1800mm high x 1140mm wide x 15mm thick
- Back wall comprising of two panels 1800mm high arching to 1936mm high x 890mm wide x 15mm thick
- Front left wall 1800mm high arching to 1936mm high x 890mm wide x 15mm thick
- Weight of side walls 35 kg each
- Weight of each back wall 26kg
- Weight of front left wall 26kg
- Walls fabricated from **LamPlas** resin composite

Roof

- Roof 1919mm wide x 1280mm deep x 15mm thick
- Roof fabricated from **LamPlas** resin composite
- Roof arched 136mm for added ventilation and head clearance
- Weight of roof 40 Kg

Door

- Door fabricated from **LamPlas** resin composite
- Door size 1800mm high x 870mm wide x 10mm thick
- Door fitted with EnviroSan dual operation latch



PLAN VIEW OF TOILET STRUCTURE WITH ROOF REMOVED

