

resoloo

Sanitation

resocrete

Moulding the Future

**resoloo MODULAR ABLUTION
1015 X 875**

Introducing The
Resoloo Modular Ablution 1015 x 875
addressing the core of Africa's sanitation needs



Visit our web-site at www.resocrete.co.za

Copyright - all information contained in this document is copyright and is the property of Resocrete

resoloo MODULAR ABLUTION 1015 X 875



Recently launched from the **moducrete** range of products is the new **StructaBond** Fibre Reinforced Polymer Composite.

Made from primarily waste products, recycled materials, by-product materials and natural stone, and with a zero moisture absorbency, **StructaBond** attains 98% green-build properties whilst retaining superior compressive strength, flexural strength, acoustic damping properties, as well as outstanding thermal blanketing

In trying to satisfy Africa's ever increasing housing and sanitation shortage, **resocrete** was tasked with solving a number of unique and fundamental problems, i.e:

- High transportation costs due to heavy weight of alternative products / concrete
- Transportation challenges due to lack of road infrastructure needed to transport heavy alternatives
- Up to 20 percent breakages during transportation due to fragile nature of concrete
- Slow erection time due to heavy component pieces
- Hygiene concerns due to high porosity of concrete
- High maintenance and corrosion due to steel frame structure
- Slow production due to curing time of concrete and bricks
- Difficult to move or relocate due to excessive weight and method of construction
- Adaption to water-borne sewerage limitations
- High Carbon Footprint due to manufacture from concrete / cement
- High internal heat build-up
- Ever increasing need for a modular solution for schools and communities
- Flexibility of design to suit unique site requirements



To meet the challenges outlined above, **resocrete** have designed the unique **Resoloo Modular Ablution** which is included in the stable of the **resocrete** range of products, to be used as a top structure for:

- Water flush systems
- Composting units (septic tank)
- Bladder storage systems
- Bucket Container system
- or even VIP latrines.

The **Resoloo Modular Ablution** is designed for fast erection, ease of moving / relocation, superior hygiene and zero maintenance, and as a modular system, can be used in any number of permutations from a single unit to a multiple ablution structure.

Unlike associated products which are made from pre-cast concrete and cement block, the **Resoloo Modular Ablution** is fabricated from **resocrete's StructaBond** Fibre Reinforced Polymer Composite resulting in a product with the following characteristics:

Product Characteristics:

- Incredible Light weight and Durable Product (up to 10 times lighter than concrete products)
- Available in any number of modules
- Designed with an easy lock system bonding the roof and walls together
- Easy to disassemble and relocate - only 2 people required!
- Sizeable transport savings due to lightweight product
- Simple, efficient and fast erection time (maximum 25 Minutes) using a screwdriver, a spanner and a silicone gun
- Modular wall design flat-packs for ease of transport and is ideal for sites with difficult or inaccessible terrain
- Unlikely transport and erection damage due to High Impact Resistance resulting in large saving in breakages
- Smooth non-porous wall, floor and roof panels are easy to keep clean and therefore far more hygienic than brick or concrete alternatives
- Zero maintenance or corrosion due to resin composite technology
- Doors fitted with injection moulded nylon hinges and unique Dual Operational Slide Latches for added security
- Available as stand alone to fit onto a concrete base, with the **ResoStruct** base, or with the lightweight **LamPlas** resin composite base
- 98 percent Green-build fabrication

resoloo MODULAR ABLUTION 1015 X 875



The **resoloo Modular Ablution 1015 x 875** can be assembled as one unit or any number of units. For the purposes of this document, four units are assembled.

The units are assembled using M6 x 20mm galvanised machine screws to attach the Front Door-Walls, Side Walls and Back Walls together and Structural Polyurethane is used to bond the Mid walls and Roofs in to place.

Product Specifications

Walls

- Side walls 1940mm high x 1015mm wide - weight 13 kg
- Back wall 1940mm high x 875mm wide - weight 9 kg
- Front Door-wall 1940mm high x 875mm wide - weight 13 kg
- Walls fabricated out of **StructaBond** fibre reinforced polymer
- Mid-wall 1940mm high x 1035mm wide, fabricated out of **LamPlas** Resin Composite - weight
- Back walls fitted with 100mm high x 300mm wide opaque plexiglass window panel
- Top of front and back walls spaced 30mm from roof to aid in ventilation.

Roof

- Roof 1075mm deep x 875mm wide with central pyramid pitch of 100mm - weight 5.5 kg
- Side Roof modules fitted with down-turn edge fascias
- Roof overhangs front and back walls by 30mm to aid in ventilation

Door

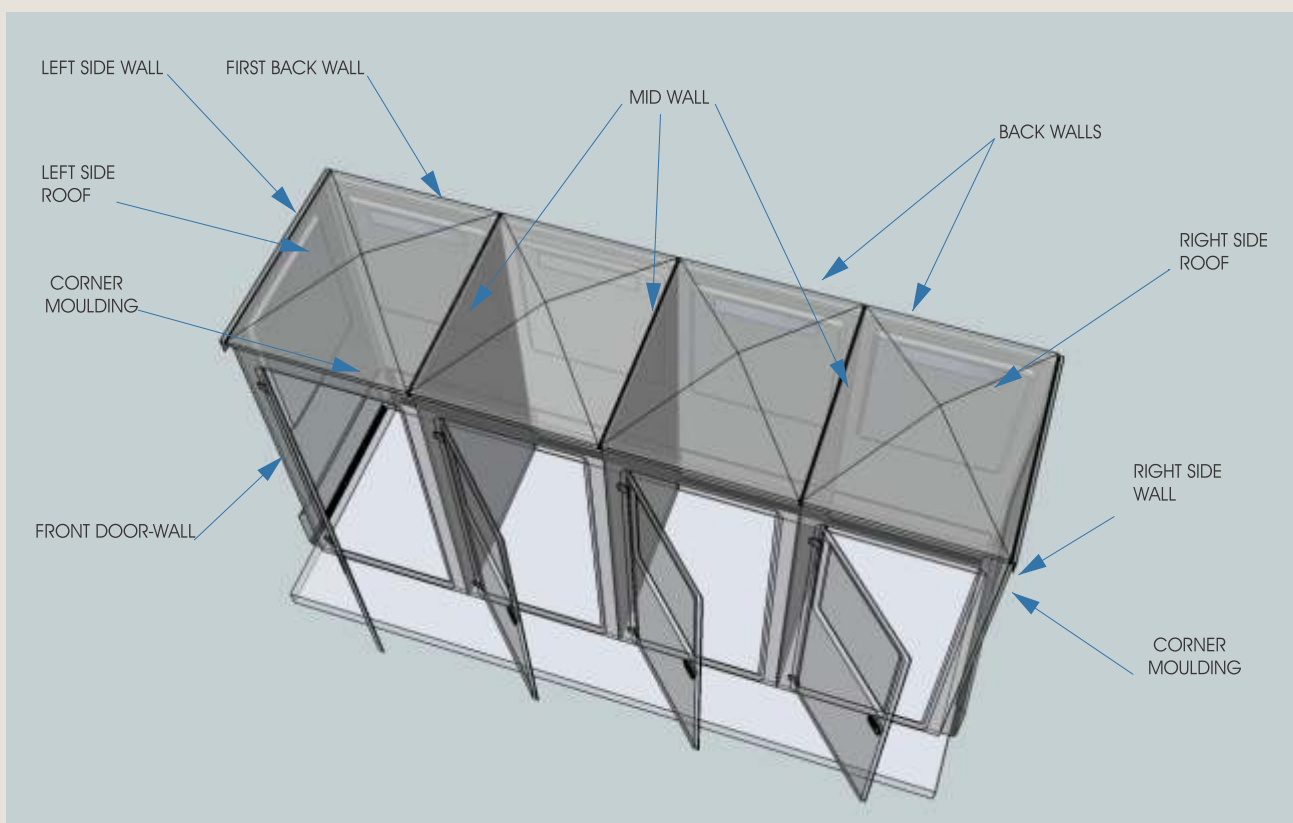
- Door size 1720mm high x 690mm wide x 20mm thick
- Doors fitted with Injection Moulded Nylon Hinges
- Doors fitted with Envirosan dual operation latch

Weight

- 4 module ablution block weighs 196 kg
- single ablution block weighs 53.5

Optional - Floor / Slab

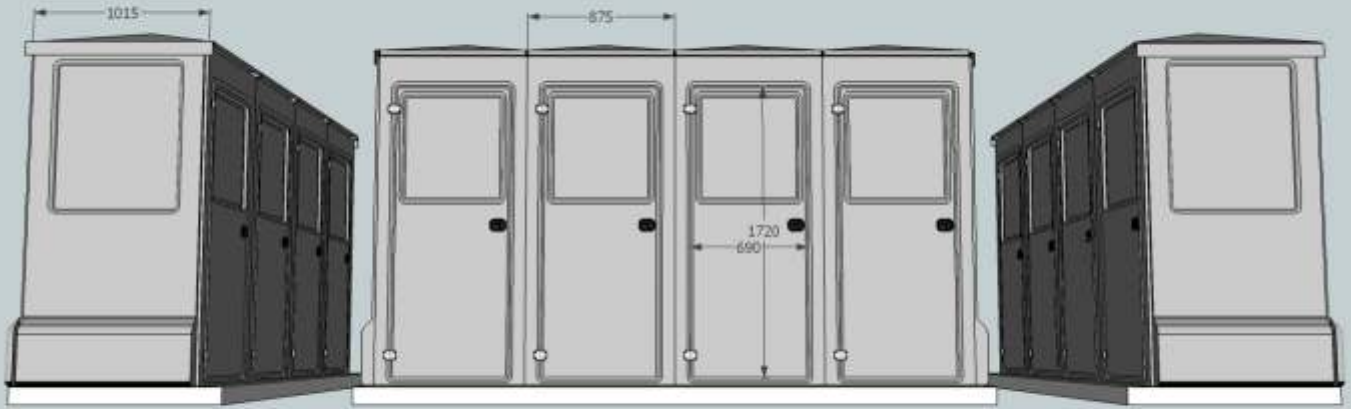
- **LamPlas** Resin Composite slab 3650mm x 1500mm x 30mm thick
- **StructaBond** Base fabricated out of 120mm x 120mm x 8mm resin composite angle sections and 5mm thick top surface with non-slip coating
- Base leveled using 6 x galvanised **Eziped** telescopic leveling legs
- Both options above are manufactured out of resin Composites and are therefore impervious to moisture and bacterial attack



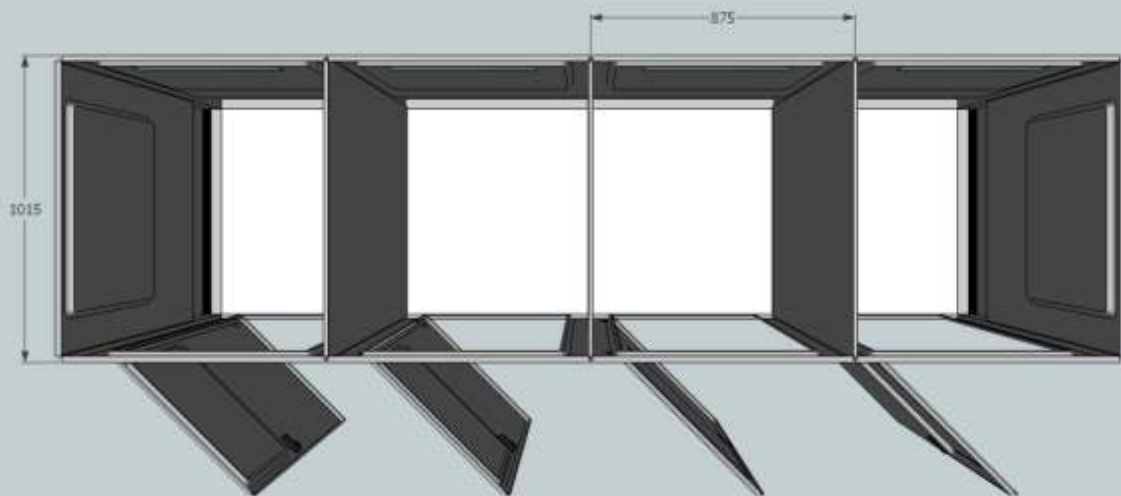
Visit our web-site at www.resoconcrete.co.za

Copyright - all information contained in this document is copyright and is the property of Resoconcrete

**resoloo MODULAR ABLUTION
1015 X 875**



ISOMETRIC ELEVATION VIEW



ISOMETRIC PLAN VIEW